



2016



MAG Audio has existed for more than 20 years. During this time, we have created our own unique approach to the development of our products, assembled a professional staff of experts, and garnered a considerable experience in the fields of speaker engineering, design and sound system installation. Each of our products is tested by professional focus-groups before its mass production, as we invite sound engineers, distributors, and musicians to help hone each model to perfection. Then we run live testing of our new products in collaboration with the best distribution companies to ensure its faculty in a real-world environment.

MAG currently presents a large variety of product series, suitable for a wide spectrum of applications and budget constraints:

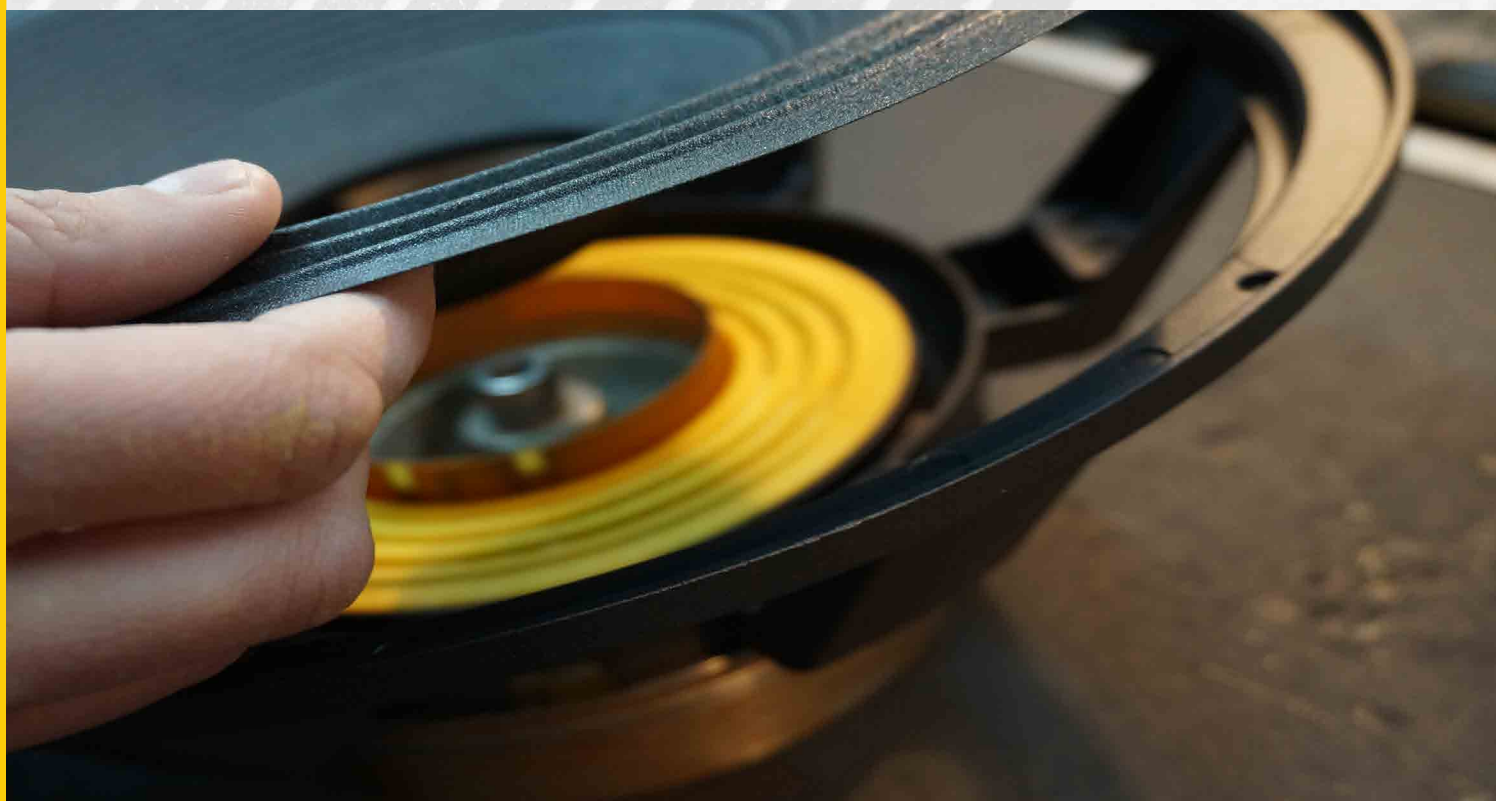
Z series provides professional sound quality and pleasing look for budget projects, while N series offer range of lightweight, high performance versatile solutions. High power MD series has developed a reputation throughout the years for its reliability and high sonic performance.

A top-class K -line of exclusively powered loudspeakers, based on amplifying modules made by PowerSoft (Italy), enables extreme sound pressure levels within very compact enclosures.

A new series of low-profile Focus stage monitors systems, based on coaxial driver units, were found to match the sound quality of some of world's best performers. Furthermore, the monitor subwoofers with its compatible design and sound performance allows easy compatibility with Drum Fill or FOH systems, giving the Focus monitors even more versatility.

The newest addition, the Hornet line array, is extremely powerful large scale indoor and outdoor solution, available with convenient setup hardware and transportation accessories, as well as complete "plug-and-play" type solutions, which include sound processing and amplification.

Our combination of technological know-how, skill, and creativity allow us to deliver only the highest grade product. MAG invites you to peruse our catalog, a testament to the strength of our brand.



Z series



Passive

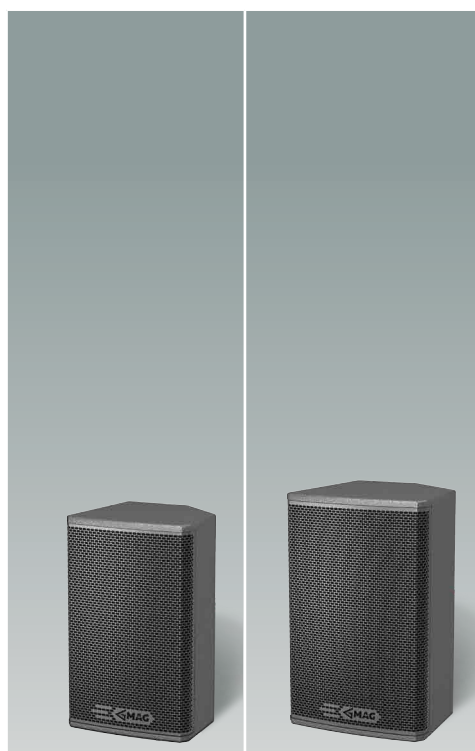
Z 100
Z 120
Z 150
Z 155
Z 220
Z 250
Z S12
Z S15
Z S18

Powered

Z 100A
Z 120A
Z 150A
Z 155A
Z 220A
Z 250A
Z S12A
Z S15A
Z S18A



Z series



Z 100

Passive full-range speaker, 10"+1"

Z 120

Passive full-range speaker, 12"+1"

Acoustical & Electrical data

Frequency Response (-10dB), Hz	65 - 18000	60 - 18000
Max SPL, dB	125 (calculated)	126 (calculated)
Sensitivity (1W/1m), dB	95	96
LF Driver	10", M1020	12", M1215
HF Driver	1", M075	1", M075
Nominal Coverage Angle (Horizontal x Vertical)	60°x40°	60°x40°
Impedance, Ohm	8 / 4	8 / 4
Nominal power, W	250	250
Program power, W	500	500
Peak power, W	1000	1000

Connections and physical data

Connectors	2x NeutrikSpeakon	2x NeutrikSpeakon
Dimensions (WxHxD), mm	329x532x309	380x602x380
Net weight, kg	16,5	21
Shipping weight, kg	19,5	24
Mounting	6x M10 flying points Pole mount adapter	6x M10 flying points Pole mount adapter
Enclosure material	Plywood; MDF; wear-resistant paint	Plywood; MDF; wear-resistant paint
Grille	Steel grill, polymer protective net	Steel grill, polymer protective net

Z 100A

Powered full-range speaker, 10"+1"

Z 120A

Powered full-range speaker, 12"+1"

Acoustical & Electrical data

Frequency Response (-10dB), Hz	65 - 18000	60 - 18000
Max SPL, dB	125 (calculated)	126 (calculated)
LF Driver	10", M1020	12", M1215
HF Driver	1", M075	1", M075
Nominal Coverage Angle (Horizontal x Vertical)	60°x40°	60°x40°
Power, W	350	350
Amplifier	Class D, convection cooling	Class D, convection cooling
Input sensitivity, dBV	0	0
Connectors	2x XLR	2x XLR
Dimensions (WxHxD), mm	329x532x309	380x602x380
Net weight, kg	19	23,5
Shipping weight, kg	22	26,5

Connections and physical

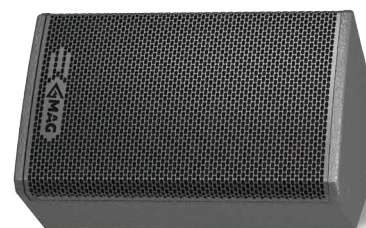
Mounting	6x M10 flying points Pole mount adapter	6x M10 flying points Pole mount adapter
Enclosure material	Plywood; MDF; wear-resistant paint	Plywood; MDF; wear-resistant paint
Grille	Steel grill, polymer protective net	Steel grill, polymer protective net

Z series is designed for budget, small and medium sized indoor spaces. Versatile and reliable loudspeakers with professional sound quality and modern looks, passive and powered Z series speakers are suitable for wide variety of applications. Full-range cabinet's specialized design allows to use them for stage monitoring, thusly greatly improving versatility and possible application ranges of Z series.

Featuring low-wear cabinet coating, high-quality components and thoroughly worked out sonic performance, Z series speakers complete with speaker way beyond their price range.

To achieve such combination of high performance, optimal sound quality and strict budget constraints, Z series systems were carefully optimized, with only high-quality and reliability sensitive components left: chipboard cabinets with obligatory birch plywood front panels, reliable Neutrik speakON connectors, and MAG loudspeakers and high-frequency drivers known for long-term reliability.

Both passive and powered version are available for all models. Powered cabinets feature bi-amp amplifiers, built-in DSP providing crossover, limiting, equalization, and wireless controls capability for ease of installation and setup.


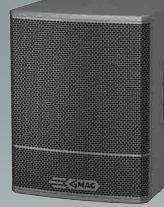
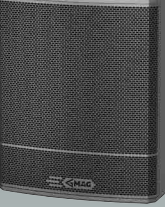




Z 150 Passive full-range speaker, 15"×1"	Z 155 Passive full-range speaker, 2×15"×1"	Z 220 Passive full-range speaker, 12"×1"	Z 250 Passive full-range speaker, 15"×1"	
50 – 18000	50 – 18000	55 – 18000	50 – 18000	Frequency Response (-10dB), Hz
128 (calculated)	135,5 (calculated)	128 (calculated)	130 (calculated)	Max SPL, dB
98	100,5	96	98	Sensitivity (1W/1m), dB
15", M1516	2×15", M1524	12", 12N400	15", 15N400	LF Driver
1", M075	1", M115	1", M115	1", M115	HF Driver
60°×40°	100°×50°	100°× 50°	100°× 50°	Nominal Coverage Angle (Horizontal × Vertical)
8 / 4	4	8 / 4	8 / 4	Impedance, Ohm
250	750	400	400	Nominal power, W
500	1500	800	800	Program power, W
1000	3000	1600	1600	Peak power, W
2x NeutrikSpeakon	2x NeutrikSpeakon	2x NeutrikSpeakon	2x NeutrikSpeakon	Connectors
426×692×392	423×1110×420	346×587×355	425×724×417	Dimensions (W×H×D), mm
25,5	39	17	23	Net weight, kg
28,5	42	20	26	Shipping weight, kg
6x M10 flying points Pole mount adapter	12x M10 flying points	3x M10 flying points Pole mount adapter	3x M10 flying points Pole mount adapter	Mounting
Plywood; MDF; wear- resistant paint	Plywood; MDF; wear- resistant paint	Plywood; wear-resistant paint	Plywood; wear-resistant paint	Enclosure material
Steel grill, polymer protective net	Steel grill, polymer protective net	Steel grill, polymer protective net	Steel grill, polymer protective net	Grille
Z 150A Powered full-range speaker, 15"×1"	Z 155A Powered full-range speaker, 2×15"×1"	Z 220A Powered full-range speaker, 12"×1"	Z 250A Powered full-range speaker, 15"×1"	
50 – 18000	50 – 18000	55 – 18000	50 – 18000	Frequency Response (-10dB), Hz
128 (calculated)	135,5 (calculated)	128 (calculated)	130 (calculated)	Max SPL, dB
15", M1516	2×15", M1524	12", 12N400	15", 15N400	LF Driver
1", M075	1", M115	1", M115	1", M115	HF Driver
60°×40°	100°× 50°	100°× 50°	100°× 50°	Nominal Coverage Angle (Horizontal × Vertical)
350	1000	600	600	Power, W
Class D, convection cooling	Class D, convection cooling	Class D, convection cooling	Class D, convection cooling	Amplifier
0	0	0	0	Input sensitivity, dBV
2x XLR	2x XLR	2x XLR	2x XLR	Connectors
426×692×392	423×1110×420	346×587×355	425×724×417	Dimensions (W×H×D), mm
28	43	19,5	25,5	Net weight, kg
31	46	22,5	28,5	Shipping weight, kg
6x M10 flying points Pole mount adapter	12x M10 flying points	3x M10 flying points Pole mount adapter	3x M10 flying points Pole mount adapter	Mounting
Plywood; MDF; wear- resistant paint	Plywood; MDF; wear- resistant paint	Plywood; wear-resistant paint	Plywood; wear-resistant paint	Enclosure material
Steel grill, polymer protective net	Steel grill, polymer protective net	Steel grill, polymer protective net	Steel grill, polymer protective net	Grille

Acoustical & Electrical
dataConnections and physical
dataAcoustical & Electrical
dataConnections and physical
data



Acoustical & Electrical data				
		Z S12 Passive subwoofer, 12"	Z S15 Passive subwoofer, 15"	Z S18 Passive subwoofer, 18"
	Frequency Response (-10dB), Hz	50 – 300	45 – 300	40 – 300
	Max SPL, dB	129 (calculated)	129,5 (calculated)	129,5 (calculated)
	Sensitivity (1W/1m), dB	97	97,5	97
	LF Driver	12", M1240	15", M1540	18", M1840
	Impedance, Ohm	8 / 4	8 / 4	8 / 4
	Nominal power, W	400	400	450
	Program power, W	800	800	900
	Peak power, W	1600	1600	1800
Connections and physical data	Connectors	2x Neutrik Speakon	2x Neutrik Speakon	2x Neutrik Speakon
	Dimensions (W×H×D), mm	372x532x501	465x605x576	552x673x647
	Net weight, kg	29	37	42
	Shipping weight, kg	32	40	45
	Enclosure material	Plywood; MDF; wear-resistant paint	Plywood; MDF; wear-resistant paint	Plywood; MDF; wear-resistant paint
	Grille	Steel grill, polymer protective net	Steel grill, polymer protective net	Steel grill, polymer protective net
Acoustical & Electrical data		Z S12A Powered subwoofer, 12"	Z S15A Powered subwoofer, 15"	Z S18A Powered subwoofer, 18"
	Frequency Response (-10dB), Hz	50 – 300	45 – 300	40 – 300
	Max SPL, dB	129 dB (calculated)	129,5 dB (calculated)	129,5 dB (calculated)
	LF Driver	12", M1240	15", M1540	18", M1840
	Power, W	500	500	500
	Amplifier	Class D, convection cooling	Class D, convection cooling	Class D, convection cooling
	Input sensitivity, dBV	0	0	0
	Connectors	2x XLR	2x XLR	2x XLR
	Dimensions (W×H×D), mm	372x532x501	465x605x576	552x673x647
	Net weight, kg	31,5	39,5	44,5
Connections and physical data	Shipping weight, kg	34,5	42,5	47,5
	Enclosure material	Plywood; MDF; wear-resistant paint	Plywood; MDF; wear-resistant paint	Plywood; MDF; wear-resistant paint
	Grille	Steel grill, polymer protective net	Steel grill, polymer protective net	Steel grill, polymer protective net

MD

series

Passive

MD 402

MD 405

MD 422

MD 425

MD 802B

MD 902B

MD 828B

Powered

MD 402A

MD 405A

MD 422A

MD 425A

MD 802BA

MD 902BA

MD 828BA





Classic series of MD acoustic systems which combines high power, compact dimensions, pleasant look and inescapably high sound quality have become a visiting card of MAG products.

Utilizing trustworthy time proven loudspeaker and HF drivers models, modern carefully designed crossover networks, compact, optimized cabinets with numerous installation options, MD series offers superior quality, modern exterior design and convenient workflow for wide spectrum of fixed and mobile sound reinforcement tasks.

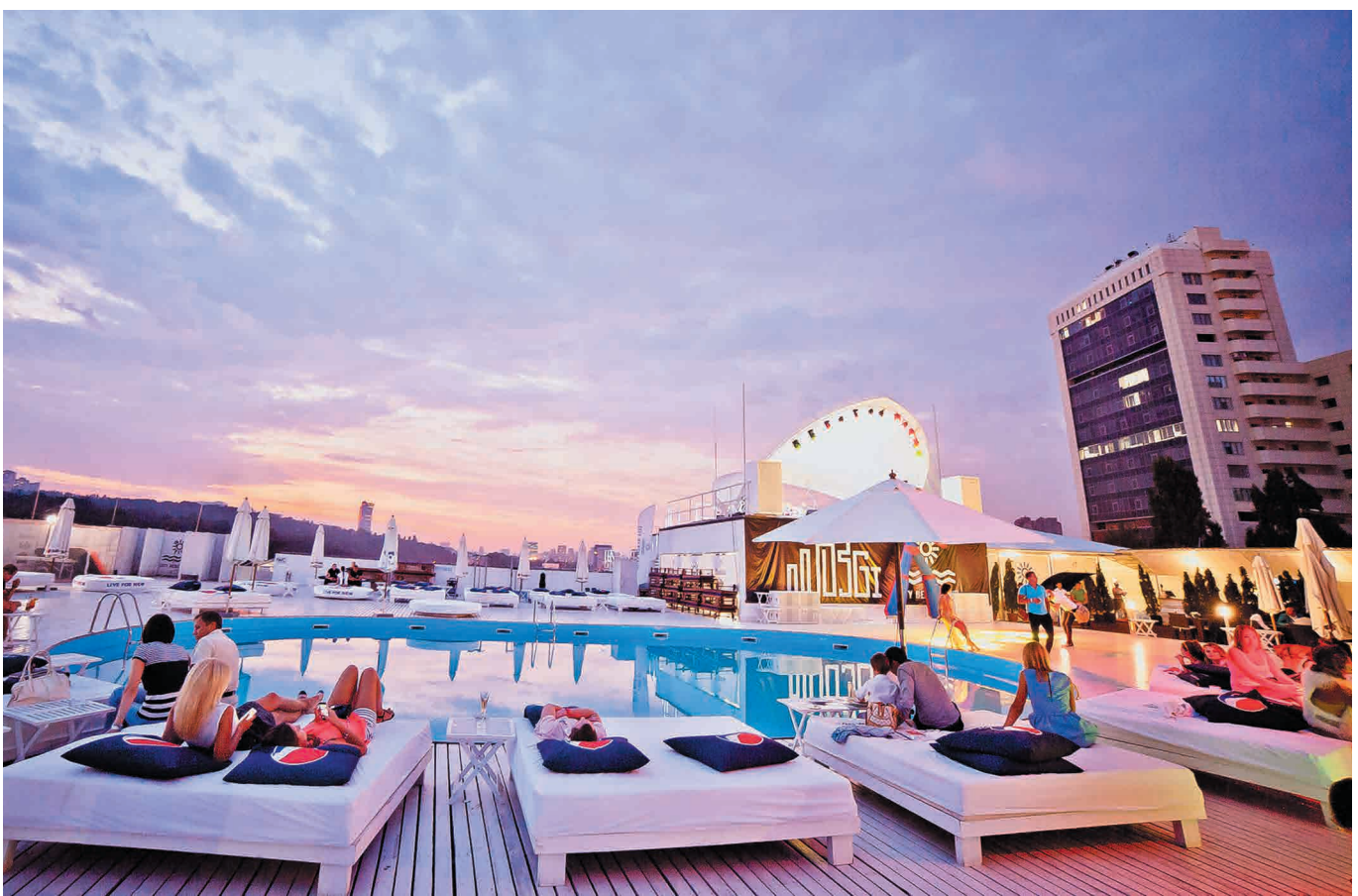
MD series is perfectly suitable for any purpose where high power, reliability and excellent sound quality is required: concert halls, culture centers, night clubs, outdoor areas, restaurants and live sound clubs.





The cabinets are made from birch plywood and covered with rigid textured paint. Neutrik speakON connectors provide comfort and reliability of operation. Original perforated steel grill, backed by acoustic foam protects loudspeakers from dust, mud, humidity and foreign objects and gives speakers a recognizable style.



MD series systems are equipped with advanced flying point system, pole mount adapters and passive/bi-amp crossover switch. Subwoofers come with M20 distance pole adapters.

All models are available in powered versions, providing bi-amp Powersoft amplification.



				
MD 402 Passive full-range speaker, 12"×1,5"	MD 405 Passive full-range speaker, 15"×1,5"	MD 422 Passive full-range speaker, 2x12"×1,5"	MD 425 Passive full-range speaker, 2x15"×1,5"	
65 - 18000	55 - 18000	75 - 18000	50 - 18000	Frequency Response(-10dB), Hz
130,5 (calculated)	131,5 (calculated)	136 (calculated)	136,5 (calculated)	Max SPL, dB
97,5	98,5	100,5	101	Sensitivity (1W/1m), dB
12", M1240	15", M1540	2x12", M1240	2x15", M1540	LF Driver
1,5", M150	1,5", M150	1,5", M150	1,5", M150	HF Driver
60° x 40°	60° x 40°	60° x 40°	60° x 40°	Nominal Coverage Angle (Horizontal × Vertical)
8 / 4	8 / 4	4	4	Impedance, Ohm
500	500	900	900	Nominal power, W
1000	1000	1800	1800	Program power, W
2000	2000	3600	3600	Peak power, W
2x Neutrik Speakon	2x Neutrik Speakon	2x Neutrik Speakon	2x Neutrik Speakon	Connector
354x663x374	416x740x449	368x985x374	416x1138x449	Dimensions (W×H×D), mm
27	33	37	50	Net weight, kg
29	35	39	52	Shipping weight, kg
Pole mount adapter 12x M10 flying points	Pole mount adapter 12x M10 flying points	12x M10 flying points	12x M10 flying points	Mounting
Plywood; wear-resistant paint	Plywood; wear-resistant paint	Plywood; wear-resistant paint	Plywood; wear-resistant paint	Enclosure material
Steel grill, polymere protective net	Steel grill, polymere protective net	Steel grill, polymere protective net	Steel grill, polymere protective net	Grille
Black	Black	Black	Black	Colour
MD 402A Powered full-range speaker, 12"×1,5"	MD 405A Powered full-range speaker, 15"×1,5"	MD 422A Powered full-range speaker, 2x12"×1,5"	MD 425A Powered full-range speaker, 2x15"×1,5"	
65 - 18000	55 - 18000	75 - 18000	50 - 18000	Frequency Response(-10dB), Hz
130,5 (calculated)	131,5 (calculated)	136 (calculated)	136,5 (calculated)	Max SPL, dB
12", M1240	15", M1540	2x12", M1240	2x15", M1540	LF Driver
1,5", M150	1,5", M150	1,5", M150	1,5", M150	HF Driver
60° x 40°	60° x 40°	60° x 40°	60° x 40°	Nominal Coverage Angle (Horizontal × Vertical)
1000	1000	1200	1200	Power, W
Class D, convection cooling	Class D, convection cooling	Class D, convection cooling	Class D, convection cooling	Amplifier
0	0	0	0	Input sensitivity, dBV
4 switchable presets	4 switchable presets	4 switchable presets	4 switchable presets	Settings
XLR in + XLR out	XLR in + XLR out	XLR in + XLR out	XLR in + XLR out	Connector
354x663x374	416x740x449	368x985x374	416x1138x449	Dimensions (W×H×D), mm
31	37	41	54	Net weight, kg
33	39	43	56	Shipping weight, kg
Pole mount adapter 12x M10 flying points	Pole mount adapter 12x M10 flying points	12x M10 flying points	12x M10 flying points	Mounting
Plywood; wear-resistant paint	Plywood; wear-resistant paint	Plywood; wear-resistant paint	Plywood; wear-resistant paint	Enclosure material
Steel grill, polymere protective net	Steel grill, polymere protective net	Steel grill, polymere protective net	Steel grill, polymere protective net	Grille
Black	Black	Black	Black	Colour

Acoustical & Electrical
data

Connections and physical
data

Acoustical & Electrical
data

Connections and physical
data

**MD 802B**

Passive subwoofer, 18"

**MD 902B**

Passive subwoofer, 18"

**MD 828B**

Passive subwoofer, 2x18"

Acoustical & Electrical data	Frequency Response (-10dB), Hz	35 – 200	40 – 200	35 – 300
	Max SPL, dB	133 (calculated)	137,5 (calculated)	138,5 (calculated)
	Sensitivity (1W/1m), dB	97	101,5	101
	LF Driver	18", M1804	18", M1801	2x18", M1861
	Impedance, Ohm	8 / 4	8 / 4	4
	Nominal power, W	1000	1000	1400
	Program power, W	2000	2000	2800
	Peak power, W	4000	4000	5600
	Connector	2x Neutrik Speakon	2x Neutrik Speakon	2x Neutrik Speakon
	Dimensions (WxHxD), mm	596x815x605	605x630x690	652x1020x784
Connections and physical data	Net weight, kg	52	52	85
	Shipping weight, kg	54	55	87
	Mounting	M20 distance pole adapter	M20 distance pole adapter	
	Transportation	4x 80mm removable castor wheels	4x 80mm removable castor wheels	4x 80mm removable castor wheels
	Enclosure materials	Plywood; wear-resistant paint	Plywood; wear-resistant paint	Plywood; wear-resistant paint
	Grill	Steel grill, polymere protective net	Steel grill, polymere protective net	Steel grill, polymere protective net
	Color	Black	Black	Black

MD 802BA

Powered subwoofer, 18"

MD 902BA

Powered subwoofer, 18"

Acoustical & Electrical data	Frequency Response (-10dB), Hz	35 – 150	40 – 200
	Max SPL, dB	133 (calculated)	136 (calculated)
	LF Driver	18", M1804	18", M1801
	Power, W	1400	1400
	Amplifier	Class D, convection cooling	Class D, convection cooling
	Input sensitivity, dBV	0	0
	Settings	4 switchable presets	4 switchable presets
	Connectors	XLR in + XLR out	XLR in + XLR out
	Dimensions (WxHxD)	596x815x605	605x630x690
	Net weight, kg	60	54
Connections and physical data	Shipping weight, kg	62	56
	Mounting	M20 distance pole adapter	M20 distance pole adapter
	Transportation	4x 80mm removable castor wheels	4x 80mm removable castor wheels
	Enclosure material	Plywood; wear-resistant paint	Plywood; wear-resistant paint
	Grille	Steel grill, polymere protective net	Steel grill, polymere protective net
	Colour	Black	Black

N series

Passive

N 10

N 12

N 15

N S15

N S18

Powered

N 10A

N 12A

N 15A

N S15A

N S18A





The new generation of MAG Audio speakers is all-neodymium N series. The sleek look, high performance, lightweight, and powerful rigging capabilities, are all in one package.

Carefully designed and optimized neodymium transducers and high frequency drivers, designed specifically for N series' demanding standards, are made for reduced cabinet sizes and weight, while providing unprecedented sound performance, in a very light and compact enclosures.

Equipped with easy-to-rig flying adapters, 10", 12" and 15" full-range speakers cover all imaginable compact speakers' applications, from small scale FOH to backline, from installation to PA. Reinforced with low profile, performance optimized 15" and 18" subwoofers, the N series offers ultimate, modern and versatile sound reinforcement solution.

Powered versions, based on state-of-the-art high-efficiency amplification modules, are made for even more control and tuning capabilities. With several independent equalization options, it is easy to set up N series rig for optimal sound in any environment. In addition, the networking adapters provide distant controlling and fine tune conveniences, and make it possible to create sophisticated sound reinforcement systems.





N 10	N 12	N 15	
Passive full-range speaker, 10"×1,5"	Passive full-range speaker, 12"×1,5"	Passive full-range speaker, 15"×1,5"	
65 – 18000	60 – 18000	55 – 18000	Frequency Response(-10dB), Hz
131 (calculated)	132 (calculated)	132,5 (calculated)	Max SPL, dB
97	98	98,5	Sensitivity (1W/1m), dB
10", 10N501	12", 12N501	15", 15N501	LF Driver
1,4", N7140	1,4", N7140	1,4", N7140	HF Driver
90° x 80°	90° x 80°	90° x 80°	Nominal Coverage Angle (Horizontal × Vertical)
8 / 4	8 / 4	8 / 4	Impedance, Ohm
600	600	600	Nominal power, W
1200	1200	1200	Program power, W
2400	2400	2400	Peak power, W
2x NeutrikSpeakon	2x NeutrikSpeakon	2x NeutrikSpeakon	Connector
319x610x336	379x660x377	436x740x423	Dimensions (W×H×D), mm
19	22	26	Net weight, kg
22	25	29	Shipping weight, kg
4x FlyTrack flying points Pole mount adapter	4x FlyTrack flying points Pole mount adapter	4x FlyTrack flying points Pole mount adapter	Mounting
Plywood; wear-resistant paint	Plywood; wear-resistant paint	Plywood; wear-resistant paint	Enclosure material
Steel grill, polymer protective net	Steel grill, polymer protective net	Steel grill, polymer protective net	Grille
N 10A	N 12A	N 15A	
Powered full-range speaker, 10"×1,5"	Powered full-range speaker, 12"×1,5"	Powered full-range speaker, 15"×1,5"	
65 – 18000	60 – 18000	55 – 18000	Frequency Response(-10dB), Hz
130,5 (calculated)	131,5 (calculated)	131,5 (calculated)	Max SPL, dB
10", 10N501	12", 12N501	15", 15N501	LF Driver
1,4", N7140	1,4", N7140	1,4", N7140	HF Driver
90° x 80°	90° x 80°	90° x 80°	Nominal Coverage Angle (Horizontal × Vertical)
1200	1200	1200	Power, W
Class D, Fan cooling	Class D, Fan cooling	Class D, Fan cooling	Amplifier
0	0	0	Input sensitivity, dBV
2x XLR	2x XLR	2x XLR	Connector
319x610x336	379x660x377	436x740x423	Dimensions (W×H×D), mm
22	25	29	Net weight, kg
25	28	32	Shipping weight, kg
4x FlyTrack flying points Pole mount adapter	4x FlyTrack flying points Pole mount adapter	4x FlyTrack flying points Pole mount adapter	Mounting
Plywood; wear-resistant paint	Plywood; wear-resistant paint	Plywood; wear-resistant paint	Enclosure material
Steel grill, polymer protective net	Steel grill, polymer protective net	Steel grill, polymer protective net	Grille

Acoustical & Electrical data

Connections and physical data

Acoustical & Electrical data

Connections and physical data



N S15

Passive subwoofer, 15"



N S18

Passive subwoofer, 18"

Acoustical & Electrical data	Frequency Response(-10dB), Hz	40 – 300	35 – 250
	Max SPL, dB	134 (calculated)	133 (calculated)
	Sensitivity (1W/1m), dB	97	96
	LF Driver	15", 15N1200	18", 18N1200
	Impedance, Ohm	8 / 4	8 / 4
	Nominal power, W	1200	1200
	Program power, W	2400	2400
	Peak power, W	4800 W	4800
Connections and physical data	Connector	2x Neutrik Speakon	2x Neutrik Speakon
	Dimensions (W×H×D), mm	596x482x570	656x482x604
	Net weight, kg	32	40
	Shipping weight, kg	35	43
	Mounting	M20 distance pole adapter	M20 distance pole adapter
	Enclosure material	Plywood; wear-resistant paint	Plywood; wear-resistant paint
	Grille	Steel grill, acoustically transparent foam	Steel grill, acoustically transparent foam

Acoustical & Electrical data		N S15A	N S18A
		Powered subwoofer, 15"	Powered subwoofer, 18"
	Frequency Response (-10dB), Hz	40 – 300	35 – 250
	Max SPL, dB	134 (calculated)	133 (calculated)
	LF Driver	15", 15N1200	18", 18N1200
	Power, W	1400	1400
	Amplifier	Class D, Fan cooling	Class D, Fan cooling
	Input sensitivity, dBV	0	0
Connections and physical data	Connectors	2x XLR	2x XLR
	Dimensions (W×H×D), mm	596x482x570	656x482x604
	Net weight	35	43
	Shipping weight	38	46
	Mounting	M20 distance pole adapter	M20 distance pole adapter
	Enclosure material	Plywood; wear-resistant paint	Plywood; wear-resistant paint
	Grill	Steel grill, acoustically transparent foam	Steel grill, acoustically transparent foam

K series

K 32A

K 25A

K 35A

K 52BA

K 81BA

K 82BA





The series of high quality MAG acoustic systems. These exclusively powered speakers use modules from pioneers and leaders at D-class amplifying – PowerSoft company. The line provides extremely high sound pressure levels and pure sound reproduction, allows to program a build-in DSP module for particular installation needs. The amplifiers have four factory presets for different use conditions. Fine adjustment to amplifiers and loudspeakers, factory DSP settings, unique three-way speaker design with tri-amping provide a user with a simple operation and high sound quality.

Three-way K 32A and K 35A models promote the series sound to a new level – the designated mid-range driver allows to deliver more pressure and intelligibility in critical mid-frequency range.






The K series comes in compact size, provides high power and allows to minimize quantity of commutation and necessary equipment. New series was initially created as powered one so it has a perfect match of electronic and acoustic components.

The most powerful and hi-tech MAG driver units are used in the K-series systems. The loudspeakers are equipped with voice coil venting system and demodulation rings for decreased distortions and improved linearity. M10 flying points are foreseen for installations.





K series

			
K 32A Powered full-range speaker, 12"×6"×1"	K 25A Powered full-range speaker, 15"×15"×2"	K 35A Powered full-range speaker, 15"×8"×1"	
60 – 20000	45 – 20000	45 – 20000	Frequency Response (-10dB), Hz
130 (calculated)	137 (calculated)	132 (calculated)	Max SPL, dB
12", M1224	15", M1570	15", M1541	LF Driver
6", M0612	15", M1585	8", ND811	MF Driver
1", N110	2", M200	1", M112	HF Driver
90° x 25°	80° x 40°	90° x 40°	Nominal Coverage Angle (Horizontal × Vertical)
600	2000	1100	Power, W
Powersoft ClassD Bi-amp LF 350W + MF-HF 250W Fan cooling	Powersoft class D Bi-amp LF 1000W+LF- MF-HF 1000W Fan cooling	Powersoft class D Tri-amp LF 700W+MF 350W+HF 50W Fan cooling	Amplifier
+4	0	+4	Input sensitivity, dBV
4 switchable presets	4 switchable presets	4 switchable presets	Settings
XLR in + XLR out	XLR in + XLR out	XLR in + XLR out	Connector
379x674x411	434x1084x444	434x961x444	Dimensions (W×H×D), mm
23,5	57	41	Net weight, kg
26	63	45	Shipping weight, kg
Pole mount adapter 3x M10 flying points	12x M10 flying points	12x M10 flying points	Mounting
Plywood; wear-resistant paint	Plywood; wear-resistant paint	Plywood; wear-resistant paint	Enclosure material
Steel grill, polymere protective net	Steel grill, polymere protective net	Steel grill, polymere protective net	Grille
Black	Black	Black	Colour

Acoustical & Electrical data

Connections and physical data



		
K 52BA Powered subwoofer, 2x15"	K 82BA Powered subwoofer, 2x18"	K 81BA Powered subwoofer, 18"

Acoustical & Electrical data	Frequency Response (-10dB), Hz	40 – 300	35 – 220	40 – 250
	Max SPL, dB	138 (calculated)	138 (calculated)	133 (calculated)
	LF Driver	2x15", M1503	2x18", M1804	18", M1862
	Power	2000	2000	1500
	Amplifier	Powersoft class D Fan cooling	Powersoft class D Fan cooling	Powersoft class D Fan cooling
	Input sensitivity, dBV	+4	+4	+4
	Settings	4 switchable presets	4 switchable presets	4 switchable presets
	Connector	XLR in + XLR out	XLR in + XLR out	XLR in + XLR out
	Dimensions (W×H×D), mm	434x968x750	561x1076x771	526x591x603
	Net weight, kg	68	92	41,5
Connections and physical data	Shipping weight, kg	71	98	46,5
	Enclosure materials	Plywood; wear-resistant paint	Plywood; wear-resistant paint	Plywood; wear-resistant paint
	Grill	Steel grill, polymere protective net	Steel grill, polymere protective net	Steel grill, polymere protective net
	Color	Black	Black	Black

Architecture series



Air-61

Air-81

Sub 12A

Sub 15A





ARCHITECTURE series' speakers were created for constant installations, public address, near-field applications and is used when high-quaility sound and compact size must fit in harmonically into the interior of a venue. The ARCHITECTURE series is recommended for clubs, bars, restaurants, bowlings, karaoke-bars, shops and shopping malls.

The cabinets of full-range systems are made of MDF, low-frequency systems are made of birch plywood. Acoustic systems are covered with textured paint and protected by hard steel grill. For installation purposes M10 hanging points and fixing brackets for wall or ceiling mounting are provided.

			
Air-61 Passive instalation speaker, 6"×1"	Air-81 Passive instalation speaker, 8"×1"	Sub 12A Powered subwoofer, 12"	Sub 15A Powered subwoofer, 15"

Acoustical & Electrical data	Frequency Response (-10dB), Hz	70 – 18000	60 – 18000	45 – 120	40 – 120	Frequency Response (-10dB), Hz
	Max SPL, dB	120 dB (calculated)	123 dB (calculated)	130 (calculated)	132 dB (calculated)	Max SPL, dB
	Sensitivity (1W/1m), dB	92.5	93	12", M1261	15", M1503	LF Driver
	LF Driver	6", M0615	8", M0821	700	1400	Power, W
	HF Driver	1", N110	1", N110	Class D Fan cooling	Class D Fan cooling	Amplifier
	Nominal Coverage Angle (Horizontal × Vertical)	60° × 40°	60° × 40°	-2,2	-2,2	Input sensitivity, dBV
	Impedance, Ohm	8 / 16	8 / 16	XLR in + XLR out	XLR in + XLR out	Connectors
	Nominal power, W	150	250	430x485x555	485x511x545	Dimensions (W×H×D), mm
	Program power, W	300	500	29	38	Net weight, kg
	Peak power, W	600	1000	31	40	Shipping weight, kg
Connections and physical data	Connectors	2x terminal plate	2x terminal plate	M20 distance pole adapter	M20 distance pole adapter	Mounting
	Dimensions (W×H×D), mm	194x324x214	230x386x255	Plywood; MDF; wear- resistant paint	Plywood; MDF; wear- resistant paint	Enclosure material
	Net weight, kg	10,5	11,5	Black	Black	Colour
	Shipping weight, kg	12,5	13			
	Mounting	4x M10 flying points	4x M10 flying points			
	Enclosure material	Plywood; MDF; wear-resistant paint	Plywood; MDF; wear-resistant paint			
	Grill	Steel grill, polymere protective net	Steel grill, polymere protective net			
	Colour	Black	Black			

Acoustical & Electrical
data
Connections and physical
data

Monitoring series

Passive

Focus 12

Focus 15

Focus Sub

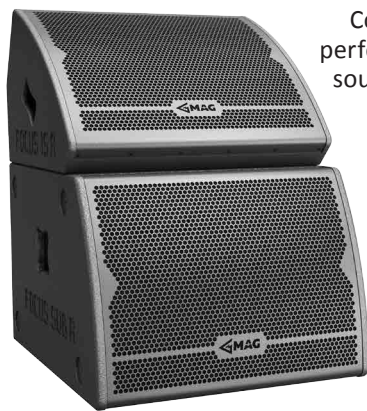
Powered

Focus 12A

Focus 15A

Focus SubA





Coaxial line of low-profile stage monitors with no casual name – coaxial design of drivers provides perfect phase coherence and clear focused sound picture in front of performer. Vocal has never sounded so clearly and thoroughly before.

The series includes top-class monitors Focus 12, Focus 15 and a Focus Sub subwoofer. Almost reference sound quality of the monitors even in passive crossover mode allows to use them as all-purpose systems, for which case a pole mount adapter is conveniently provided.

Special 15" subwoofer FocusSub boosts versatility of Focuses even more: it creates powerful monitor set for a drummer together with Focus 15; or can be used for DJ monitoring and even FOH purposes due to distance pole adapters. Besides ideal sound quality and reproduction purity, we have paid much attention to appearance and ease of use. Modern look, rigid grill backed with acoustic foam, light weight and stable design make Focus monitors comfortable and practical in small installations as well as in big concert tours.

Neutrik speakON connectors are placed on both side of cabinet, making it convenient to create monitor chains. Also, passive/bi-amp crossover switches are optionally available for Focus 12 and Focus 15 along with the speaker processor packed with factory presets.



	Focus 12 Stage monitor, 12"	Focus 15 Stage monitor, 15"	Focus Sub Passive subwoofer, 18"	
Acoustical & Electrical data	Frequency Response (-10dB), Hz	70 – 20000	60 – 19000	45 – 350
	Max SPL, dB	128,5 (calculated)	129 (calculated)	131 dB (calculated)
	Sensitivity (1W/1m), dB	96,5	97	96,5
	Coaxial driver	12", CX 12-2	15", CX 15-2	15", M1570
	Nominal Coverage Angle (Horizontal × Vertical)	40° × 60° or 60° × 40° Rotating horn selectable	40° × 60° or 60° × 40° Rotating horn selectable	8
	Impedance, Ohm	8	8	700
	Nominal power, W	400	400	1400
	Program power, W	800	800	2800
	Peak power, W	1600	1600	2800
	Connectors	2x Neutrik Speakon	2x Neutrik Speakon	2x Neutrik Speakon
Connections and physical data	Dimensions (W×H×D), mm	490×320×431	590×358×507	601×441×655
	Net weight, kg	18,5	21	34
	Shipping weight, kg	21	22	36
	Mounting	Pole mount adapter U-Bracket flying mount (optional)	Pole mount adapter U-Bracket flying mount (optional)	M20 distance pole adapter
	Enclosure materials	Plywood; wear-resistant paint	Plywood; wear-resistant paint	Plywood; wear-resistant paint
	Grill	Steel grill, polymere protective net	Steel grill, polymere protective net	Steel grill, polymere protective net
	Color	Black	Black	Black
				Color
	Focus 12A Powered stage monitor, 12"	Focus 15A Powered stage monitor, 15"	Focus SubA Powered subwoofer, 18"	
Acoustical & Electrical data	Frequency Response (-10dB), Hz	70 – 18000	60 – 18000	45 – 200
	Max SPL, dB	128,5 (calculated)	129 (calculated)	131 (calculated)
	Coaxial driver	12", CX12-2	15", CX15-2	15", M1570
	Nominal Coverage Angle (Horizontal × Vertical)	40° × 60° or 60° × 40° Rotating horn selectable	40° × 60° or 60° × 40° Rotating horn selectable	1500
	Power, W	700	700	Class D Powersoft ® Fan cooling
	Amplifier	Class D Powersoft ® Convection cooling	Class D Powersoft ® Convection cooling	Class D Powersoft ® Fan cooling
	Input sensitivity, dBV	+4	+4	+4
	Settings	4 switchable presets	4 switchable presets	4 switchable presets
	Connectors	XLR in + XLR out	XLR in + XLR out	XLR in + XLR out
	Dimensions (W×H×D), mm	490×320×431	590×358×507	601×441×655
Connections and physical data	Net weight	20	22	36
	Shipping weight	22	24	38
	Mounting	Pole mount adapter U-Bracket flying mount (optional)	Pole mount adapter U-Bracket flying mount (optional)	M20 distance pole adapter
	Enclosure material	Plywood; wear-resistant paint	Plywood; wear-resistant paint	Plywood; wear-resistant paint
	Grille	Steel grill, polymere protective net	Steel grill, polymere protective net	Steel grill, polymere protective net
	Colour	Black	Black	Black
				Colour

Performance
series

CLUB 210
TOP 550
SUB 200
SUB 280





Powerful acoustic series for touring, open air events, concert hall and big night clubs. When volume levels and sound pressure are of the essence – here is the solution.

PERFORMANCE series feature direct radiation vented systems, fitted in rugged, rock-solid cabinets on castor wheels.

The cabinets are made of high quality birch plywood, covered with textured acrylic finish and are protected by steel grill.

Classical MAG SUB 200 hybrid subwoofer, being in production for many years, is used by big distribution companies fitting riders of world stars and providing up 144dB of sound pressure.

			
CLUB 210	TOP 550	Sub 200	Sub 280
Passive full-range speaker, 2x10" + 2"	Passive full-range speaker, 2x15" + 2"	Passive subwoofer 2x15"	Passive subwoofer 2x18"
55 – 18000	45 – 18000	37 – 120	35 – 200
132 dB (calculated)	138,5 (calculated)	144 (calculated)	142 (calculated)
98	101	105	102
2x10", M1041	2x15", M1585	2x15", M1503	2x18", M1805
2", M200	2", M210	8 / 4	4
85° x 55°	80° x 40°	2000	2400
8 / 4	4	4000	4800
900	1600	8000	9600
1800	3200	2x Neutrik Speakon	2x Neutrik Speakon
3600	6400	700x960x900	561x1076x742
2x Neutrik Speakon	2x Neutrik Speakon	92	88
750x300x353	547x1146x590	96	91
35	68	Plywood; wear-resistant paint	Plywood; wear-resistant paint
37	70	Steel grill	Steel grill
8x M10 flying points	2x 100mm castor wheels	Black	Black
Plywood; wear-resistant paint	Plywood; wear-resistant paint		
Steel grill	Steel grill		
Black	Black		



LINE ARRAY series

Wave 10
WaveSub 18
Hornet 12
HornetSub 18
Fly 6
FlySub 12
FlySub 15
FlySub 18

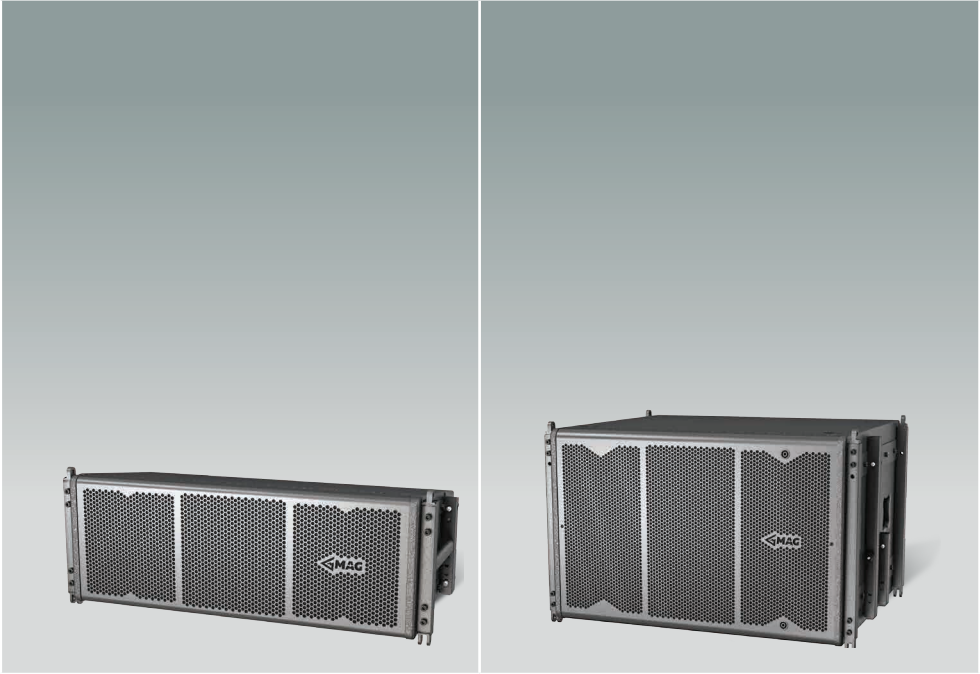




The equipment of choice for many indoor and outdoor installations, tours and concert venues, the Wave 10 line array was the result of close cooperation between MAG Audio engineers and numerous sound engineers, producers and audio industry professionals.

All the components of the system starting with cabinets, waveguides, speakers and ending with integrated flying system and subwoofers were created as one structure. Wave line array comes with fully packed rack of processing and amplification, so a user just has to provide a signal and a power supply. Several presets for different tasks and remote processor control capability are provided as well.

An integrated flying system allows for many choices of the line array usage. Ground stack or flying cluster, with or without subwoofers – no problem. Subwoofer's construction allows to create a system of cardioid directivity, for which special processor presets are included as well. System is complete with transportation cases, bags and wheel-boards.



	Wave 10	WaveSub 18
	Passive line array module, 900W	Passive line array subwoofer, 1200W
Acoustical & Electrical data	Frequency Response (-10dB), Hz	60 – 18000
	Max SPL, dB	134 dB (calculated)
	Sensitivity (1W/1m), dB	98,5
	LF Driver	2x10", M1041
	HF Driver	1,5", M150
	Nominal Coverage Angle (Horizontal x Vertical)	110° x 15°
	Impedance	16 Ohm LF, 16 Ohm LF-HF
	Nominal power	900 W (450 W + 450 W)
	Program power	1800 W (900 W + 900 W)
	Peak power	3600 W (1800 W + 1800 W)
Connections and physical data	Connectors	2x Neutrik Speakon
	Dimensions (WxHxD), mm	856x293x396
	Net weight, kg	40
	Shipping weight, kg	45
	Mounting	Integrated flying hardware -2,5° - 15° Sply angle
	Enclosure material	Plywood; wear-resistant paint
	Grill	Steel grill, polymere protective net
	Colour	Black

Hornet - is the newest addition to the MAG Audio family of line arrays. Extremely powerful 3-way all-neodymium Hornet 12 units delivers ultimate sound pressure levels, while retaining control and steering of the sonic picture.

Based on own MAG Audio carefully developed high-efficient neodymium cone transducers and HF drivers, Hornet 12 was created to be most compact, lightweight and powerful system for mid to large scale indoor and outdoor concerts, touring, sport events, and clubs.

Fitted with proprietary design flying hardware, Hornet 12 stacking and flying is quick and easy, with link action easily understood even by the child. Followed by numerous setup options, including flying directly from ground carts, Hornet 12 is the choice for mobile professionals, touring teams, and rental sound.

For even more impact, Hornet line array is completed with dual 18-inch hybrid horn Hornet Sub 18 subwoofers, capable of delivering tremendous 147 dB peak sound pressure level per single unit.



Hornet 12

Passive line array module, 2600W



Hornet Sub 18

Passive line array subwoofer, 3200W

		Frequency response (-10dB)
60 – 18000 Hz	35 – 120 Hz	Max SPL (peak)
142 dB (calculated)	147 dB (calculated)	Sensitivity (1W/1m)
99 dB LF / 107 dB MF / 112 dB HF	106 dB	LF Driver
2x12", 12N1000	2x18", 18N1600	MF Driver
4x6", 6N100		HF Driver
2x1,4", N7140		Nominal coverage HxV
110° x 15°		Impedance
8 Ohm LF / 8 Ohm MF / 8 Ohm HF	4 Ohm	Nominal power
2600 W (2000 W + 400 W + 200 W)	3200 W	Program power
5200 W	6400 W	Peak power
10400 W	12800 W	Connectors
2x Neutrik Speakon	2x Neutrik Speakon	Dimensions (WxHxD)
975x379x451 mm	980x734x938 mm	Net weight
70 kg	105 kg	Shipping weight
74 kg	110 kg	Mounting
Integrated flying hardware 0° - 10° Sply angle	Integrated flying hardware	Enclosure materials
Plywood; wear-resistant paint	Plywood; wear-resistant paint	Grill
Steel grill, polymere protective net	Steel grill	Color
Black	Black	

Acoustical & Electrical data

Connections and physical data



Fly 6

Powered line-array module, 1050 W

Fly 6 - is a compact powered line array with fixed vertical disclosure angle. This system was specially designed for use in small concert halls, theaters and clubs, where the features of line array are needed. Based on new neodymium drivers, Fly 6 sets a new standards in relation between size, power and sound. Structurally Fly 6 has a closed box with 4-frontally loaded 6-inch neodymium speakers and 2-neodymium 1-inch HF drivers loaded on the waveguide. Each speaker is powered by Powersoft four-channel digital amplifier module with hi-tech DSP.



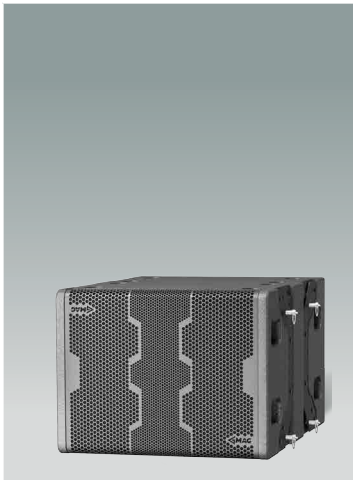
Due to its design and large accessories selection this system is easy to use and has many installation options : suspension - up to 4 modules; ground-stack - up to 3 modules. System could be mounted on a stand or adapter, etc.

Fly 6 is reinforced by comprehensive range of subwoofers: dual 12 inch flyable Fly Sub 12, versatile dual 15 inch Fly Sub 15, and ultimate dual 18 inch Fly Sub 18.

Acoustical & Electrical data

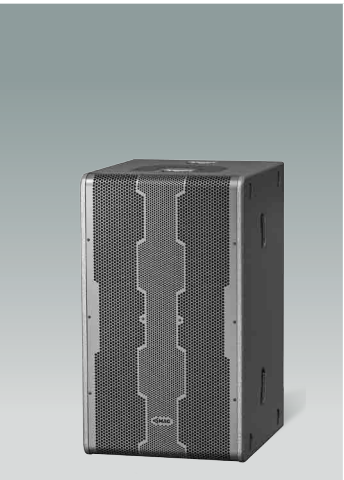
Connections and physical data

Frequency Response (-10dB), Hz	100 – 19000
Max SPL, dB	131,5 (calculated)
LF Driver	4x 6", 6N101
MF Driver	2x 1", N4102
Nominal Coverage Angle (Horizontal x Vertical)	100° x 15°
Power, W	1050
Amplifier	Class D Powersoft® Fan cooling
Input sensitivity, dBV	+4
Settings	4 switchable presets
Connector	XLR in + XLR out
Dimensions (WxHxD), mm	496x376x396
Net weight, kg	24
Shipping weight, kg	27
Mounting	Integrated flying hardware
Enclosure material	Plywood; wear-resistant paint
Grille	Steel grill, polymere protective net
Colour	Black



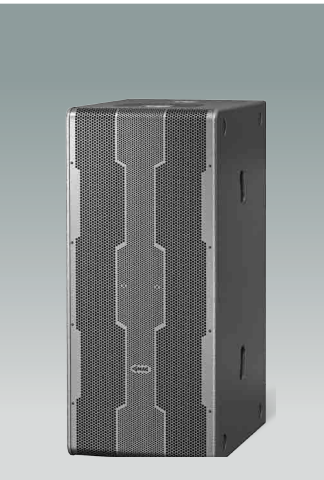
FlySub 12

Powered line-array subwoofer, 1400 W



FlySub 15

Powered line-array subwoofer, 2000 W



FlySub 18

Powered line-array subwoofer, 2000 W

Acoustical & Electrical data

Connections and physical data

Frequency Response (-10dB), Hz	60 – 220	45 – 200	27 – 150
Max SPL, dB	133 (calculated)	136 (calculated)	138 (calculated)
LF Driver	2x 12", 12N400	2x 15", M1570	2x 18", M1862
Power, W	1400	2000	2000
Amplifier	Class D Powersoft® Fan cooling	Class D Powersoft® Fan cooling	Class D Powersoft® Fan cooling
Input sensitivity, dBV	+4	+4	+4
Settings	4 switchable presets	4 switchable presets	4 switchable presets
Connector	XLR in + XLR out	XLR in + XLR out	XLR in + XLR out
Dimensions (WxHxD), mm	496x380x694	506x860x578	506x1146x676
Net weight, kg	36	59	79
Shipping weight, kg	39	63	84
Mounting	Integrated flying hardware	M20 distance pole adapter Fly array U-bracket adapter	M20 distance pole adapter Fly array U-bracket adapter
Enclosure materials	Plywood; wear-resistant paint	Plywood; wear-resistant paint	Plywood; wear-resistant paint
Grill	Steel grill	Steel grill	Steel grill
Color	Black	Black	Black

PLUG & PLAY series

Complete 12

Complete 15

Vera II

Vera IV





Complete 12
Powered speaker set, 1400 W



Complete 15
Powered speaker set, 2100 W

Acoustical & Electrical
data

Frequency Response (-10dB), Hz	45 – 18000	40 – 18000
Max SPL, dB	127 (calculated)	129 (calculated)
Subwoofer transducer	12", M1261	15", M1503
Top speakers' transducers	8"+1" (M0821 + N110)	10"+1" (M1020 + N110)
Nominal Coverage Angle (Horizontal × Vertical)	90° × 60°	90° × 60°
Amplifier power	700W + 350W + 350W	1400W + 350W + 350W
Amplifier	Class D, Tri-amp Fan cooling	Class D, Tri-amp Fan cooling
Input sensitivity, dBV	-2,2	-2,2
Connectors	2x XLR female in, 2x XLR male out 2x Speakon for satellite speakers	2x XLR female in, 2x XLR male out 2x Speakon for satellite speakers
	Connections and physical data – satellite speaker	Connections and physical data – satellite speaker
Dimensions (W×H×D), mm	230x416x255	271x447x320
Net weight, kg	10,5	12
Shipping weight, kg	11,5	13,2
Mounting	Dual angle pole mount adapter	Dual angle pole mount adapter
Enclosure material	Plywood; MDF; wear-resistant paint	Plywood; MDF; wear-resistant paint
Grill	Steel grill, polymere protective net	Steel grill, polymere protective net
Colour	Black	Black
	Connections and physical data – subwoofer	Connections and physical data – subwoofer
Dimensions (W×H×D), mm	430x485x555	485x511x545
Net weight, kg	30	37
Shipping weight, kg	32	39
Mounting	M20 distance pole adapter	M20 distance pole adapter
Enclosure material	Plywood; wear-resistant paint	Plywood; wear-resistant paint
Color	Black	Black

Connections and physical
data

PLUG & PLAY series proposes compact portable solutions, which in the best way combines power and high sound quality. Totally independent powered systems consists of a small subwoofer and miniature satellites, still delivering considerable sound pressure.



The PLUG & PLAY solutions are ideal for small- and medium-sized bars, restaurants, karaoke-bars, corporate events and parties.

One of the most important features of PLUG & PLAY is the convenience and ease of use. These sets are ready-to-use “right-out-of-the box” plug and play. User just connects satellites to active subwoofer with build-in three-channel amplifier.

Additionally, extra subwoofers may be used for further expansion of the system.

The loudspeakers are made of high-quality birch plywood and covered with flow-wear textured paint. The bandpass subwoofers are optionally equipped with castor wheels. The satellites have two-angle pole mount adapters, and subwoofers have M20 sockets for distance pole-mounted satellites.

All models are available in powered versions, providing bi-amp Powersoft amplification.

			
Vera II Powered speaker set, 2400 W		Vera IV Powered speaker set, 3000 W	
45 – 20000	42 – 20000	Frequency Response (-10dB), Hz	Acoustical & Electrical data
128dB (calculated) per one subwoofer and satellite	131dB (calculated) per one subwoofer and satellite	Max SPL, dB	
12", M1261, per unit	15", 15N500, per unit	Subwoofer transducer	
2x6"+1" (2x 6N101 + N4101)	4x6"+1" (4x6N101 + N4101)	Top speakers' transducers	
90° x 40°	90° x 40°	Nominal Coverage Angle (Horizontal x Vertical)	
2x (700W+350W+150W)	2x (750W+750W)	Amplifier power	Connections and physical data
Class D Powersoft®, Tri-amp Fan cooling	Class D Powersoft®, Bi-amp Fan cooling	Amplifier	
+4	+4	Input sensitivity, dBV	
XLR female in, XLR male out Speakon for satellite	XLR female in, XLR male out Speakon for satellite speaker	Connector	
Connections and physical data – satellite speaker	Connections and physical data – satellite speaker		
171x538x223	171x870x222	Dimensions (W×H×D), mm	
9	14	Net weight, kg	
Pole mount adapter 3xM10 flying paints	Pole mount adapter 3xM10 flying paints	Mounting	
Plywood; wear-resistant paint	Plywood; wear-resistant paint	Enclosure material	
Steel grill, polymere protective net	Steel grill, polymere protective net	Grille	
Black	Black	Colour	
Connections and physical data – subwoofer	Connections and physical data – subwoofer		
480x550x494	621x450x607	Dimensions (W×H×D), mm	
32	39	Net weight, kg	
M20 distance pole adapter	M20 distance pole adapter	Mounting	
Plywood; wear-resistant paint	Plywood; wear-resistant paint	Enclosure material	
Steel grill, polymere protective net	Steel grill	Grille	
Black	Black	Colour	



2 Merezhna str., Bila Tserkva,
Kyiv oblast, 09112, Ukraine
Tel./Fax.: +38 044 2774789
e-mail: info@mag-audio.com
www.mag-audio.com